

Crosstown 2526

Panel
Acoustic



Birch
031



Ray
030



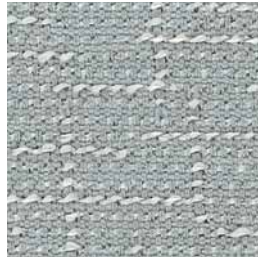
Chamois
050



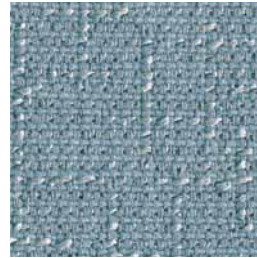
Buff
080



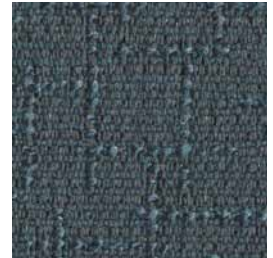
Stucco
070



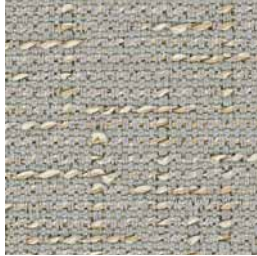
Sterling
061



Waterfront
040



Mystic
020



Fieldstone
060



Cement
010



Graphite
021



Guilford of Maine®

Crosstown 2526

Panel
Acoustic

Specifications

Content

23% post-consumer recycled polyester
77% pre-consumer recycled polyester

Weight

13.6 ± 1.0 oz./lin. yd.

Width

66" min. useable

Repeat

12.5" vertical, 16.2" horizontal

Cleaning Code

Standard Care Label W-S. Clean with water based cleaning agents, foam or pure, water free solvents. Vacuuming or light brushing is recommended to prevent dust and soil buildup.

Performance



Colorfastness to Light (AATCC 16 Option 3)
Grade 4 min. at 40 hours



Colorfastness to Crocking (AATCC 8)
Grade 4 min. dry & Grade 3 min. wet



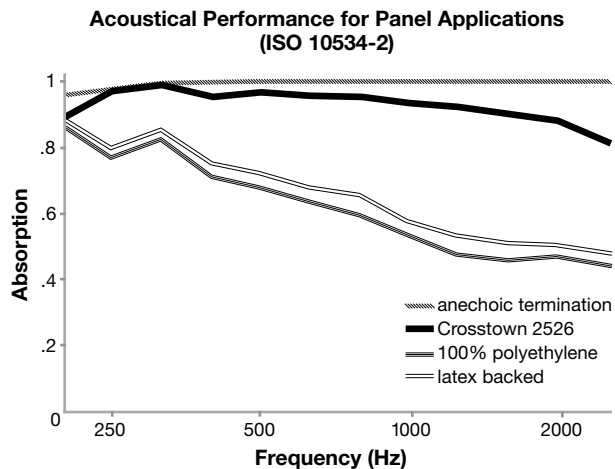
Breaking Strength (ASTM D5034)
250 lbf min. warp and 150 lbf min. fill



Flammability (ASTM E84)
Class I or A

Acoustical Performance

The plot below summarizes impedance tube measurements of absorption of an anechoic termination and various fabrics in front of the anechoic termination.



NRC of anechoic termination
1.00

NRC of fabric in front of anechoic termination
.95

Miscellaneous

Every effort has been made to ensure color accuracy of the digital images, however, please order a sample before specification. Application testing of this product is recommended. Colors may vary between dye lots. This is a directional fabric.

Proudly woven in the USA supporting our local communities.

Visit guilfordofmaine.com for samples.



Terratex is a registered trademark of True Textiles, Inc. and designates fabrics that are made from 100% recycled or compostable material using increasingly sustainable manufacturing practices to produce a high quality product that is recyclable at the end of its useful life.



CO₂ emissions from 100% of the electricity used by the manufacturer to produce this product have been measured and offset in accordance with The CarbonNeutral Protocol.



This pattern is included in the underwriters laboratory panel fabric recognition program. Additional testing of this U.L. recognized component fabric is not required on approved panels from participating manufacturers.

*ACT® registered certification marks.

Guilford of Maine

guilfordofmaine.com

800 544 0200 Customer Care
616 554 2255 Fax

08/14