

SPECIALTY CEILINGS

BOOK BAFFLES

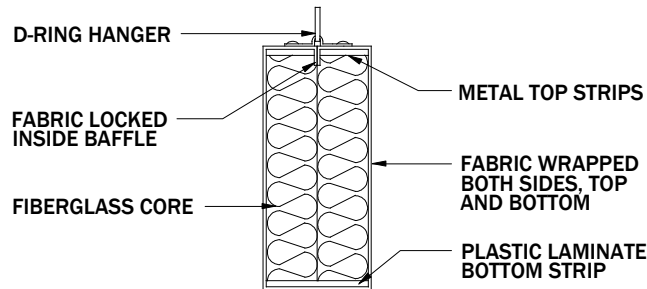
SOUND CONCEPTS BOOK BAFFLES ARE MANUFACTURED USING TWO PIECES OF OUR IMPACT RESISTANT 6-7 PCF FIBERGLASS CORE WHICH IS ACOUSTICALLY ABSORPTIVE. THE ENTIRE CORE IS INERT, NON-COMBUSTIBLE AND DIMENSIONALLY STABLE.

THE MOST COMMON APPLICATION OF THESE PANELS ARE WHEN THE BOOK BAFFLES ARE WRAPPED WITH A 100% WOVEN POLYESTER FABRIC. THE FABRIC IS BONDED WITH ACOUSTICALLY TRANSPARENT ADHESIVE TO BOTH FACES AND ALL EDGES TO ELIMINATE FABRIC SAG OR PUCKERING. PRIOR TO CLOSING THE BOOK BAFFLE EXCESS FABRIC AT THE SIDES AND TOP ARE TRIMMED AND BONDED INSIDE TO LOCK FABRIC IN PLACE. ALL BOOK BAFFLES 30" OR LESS IN HEIGHT HAVE A SEAMLESS BOTTOM. CORNERS ARE TAILORED AND HEAT FUSED

OTHER FACING MATERIALS RANGING FROM WEBCORE VINYL TO DESIGNTEX FABRICS, MAHARAM FABRICS TO ARC-COM FABRICS ARE ALSO AVAILABLE. CONSULT YOUR LOCAL REP OR FACTORY CONSULTANT FOR AVAILABILITY AND SUITABILITY OF FABRICS.

SOUND CONCEPTS BOOK BAFFLES PROVIDE EXCELLENT NOISE ABSORPTIVE QUALITIES.

BOOK BAFFLES CAN BE SUPPLIED WITH SIGN LETTERING AS AN ADDED BENEFIT AND JOINING BAFFLE CONNECTORS ARE AVAILABLE WHEN A LONG CONTINUOUS RUN OF BAFFLES ARE REQUIRED.



- EDGES:** REFLECT (SOFT), CHEMICALLY HARDENED
- EDGE PROFILE:** SQUARE, BULLNOSED
- CORNERS:** SQUARE, RADIUSED
- MOUNTING:** D-RINGS SCREWED TO TOP OF BAFFLE TO RECIEVE HANGING DEVICES BY OTHERS
- FACING MATERIALS:** EUROMAT PAINTED WHITE OR CUSTOM COLOR
100% WOVEN POLYESTER, WEBCORE AND MOST OTHER PANEL FABRICS
(CONTACT YOUR LOCAL REP OR FACTORY CONSULTANT FOR AVAILABILITY & SUITABILITY)
- SIZES:** BOOK BAFFLES - STANDARD - UP TO 30" x 120"
SEAMED BAFFLES - STANDARD - UP TO 48" x 120"
(CUSTOM OVERSIZED PANELS ARE ALSO AVAILBLE)
- STANDARD TOLERANCES:** (+) (-) 1/16" ON LENGTH, WIDTH & THICKNESS.
- THICKNESS:** 2" (CUSTOM THICKNESS ALSO AVAILBLE)

DESCRIPTION	125HZ	250HZ	500HZ	1000HZ	2000HZ	4000HZ	SABINS
2" FIBERGLASS BAFFLE WITH FABRIC (Absorption expressed in sabins per based on a 2'x4' module)	2.8	6.5	12.3	15.2	15.2	15.7	12.3

SABIN: A unit of acoustic absorption equivalent to the abosorption by one square foot of a surface that absorbs all incident sound. (After Wallace Clement Sabine 1868-1919, American Physicist.)

ALL NOISE REDUCTION COEFFICIENT (NRC) TESTS AS PER ASTM C-423 (TYPE A MOUNTING)
ALL REFLECT PANEL COMPONENTS MEET CLASS A FLAME SPREAD AS TESTED UNDER ASTM E84
CONTACT SOUND CONCEPTS FOR SOUND ABSORPTION AVERAGE (SAA) VALUES

SOUND CONCEPTS