

1 | 2 | 3 | 4

Z-BAR/ CLIP INSTALLATION GUIDE

SOUND CONCEPTS Z-BAR/CLIPS ARE QUICK TO INSTALL., BECAUSE WE HAVE SIMPLIFIED THE INSTALLATION METHODS

C WHEN Z-BAR/CLIPS ARE SPECIFIED, SOUND CONCEPTS WILL ATTACH THE Z-CLIPS TO THE FACTORY INSTALLED IMPALIT CLIPS. (WE HARDEN IN OUR IMPALIT CLIPS BECAUSE WE DON'T TRUST THE HOLDING POWER OF SCREWS IN HARD SPOTS)

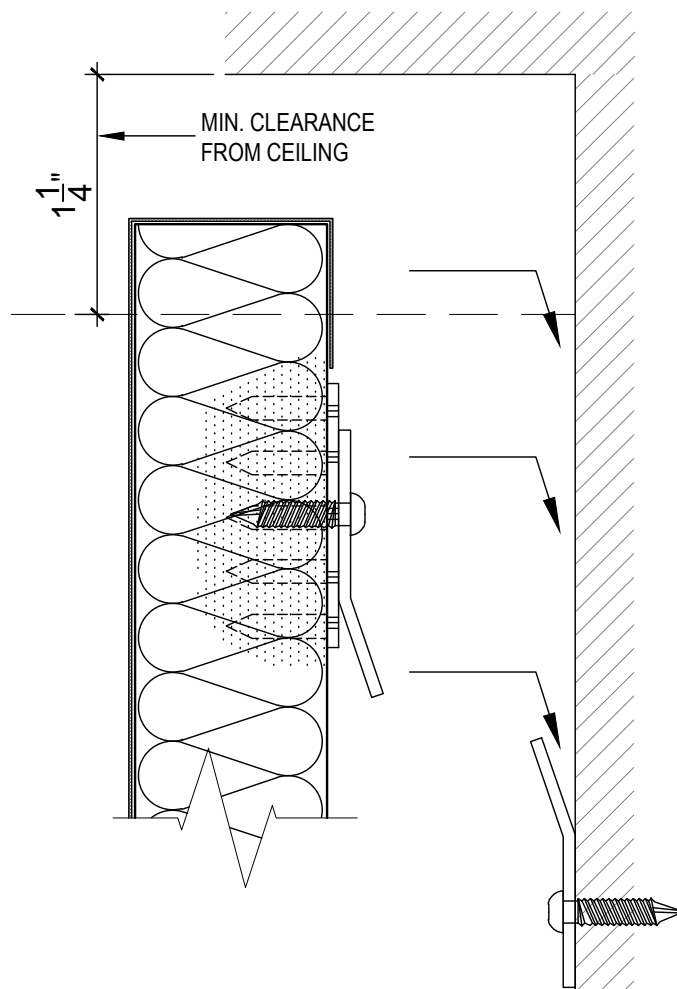
DETERMINE THE LOCATIONS OF THE Z-CLIPS AND TRANSFER THESE LOCATIONS TO THE WALL
 - REMEMBER TO KEEP A MINIMUM OF 1-1/4" CLEARANCE FROM THE TOP OF THE PANEL TO THE UNDER SIDE OF THE CEILING, TO ALLOW THE PANELS TO BE LIFTED INTO PLACE. AT THE SAME TIME, DETERMINE IF ANY SHIMMING WILL BE REQUIRED

LEVELING BRACKETS ARE AN OPTION AND SUPPLIED ONLY WHEN SPECIFIED. IF LEVELING BRACKETS ARE REQUIRED - 2 PER PANEL (CONTINUOUS LEVELING BRACKETS ALSO AVAILABLE) WILL BE INCLUDED WITH THE Z-BARS
 LEVELING BRACKETS ARE TO BE INSTALLED FIRST

B SCREW THE Z-BAR (WALL PORTION) INTO SOLID GROUNDS ON THE WALL. (MEASURE DOWN FROM TOP OF PANEL TO BOTTOM OF PANEL Z-CLIP, SUBTRACT 5/8" TO LOCATE TOP OF Z-BAR) SCREW ALL OF THE Z-BARS TO WALL FOR ONE PANEL ONLY. HANG FIRST PANEL FOR FIT AND ALIGNMENT, THEN REMOVE FROM FIRST PANEL Z-BAR LOCATIONS, SNAP LEVEL CHALK LINES, MARK PANEL JOINTS ON WALL, THUS ALLOWING YOU TO INSTALL REMAINDER OF Z-BARS BEFORE HANGING PANELS

ONCE ALL BARS ARE IN PLACE, CLEAN HANDS AND HANG PANELS

A



soundconcepts
 Making your ideas resonate

599 Henry Street
 Winnipeg, Manitoba
 Canada R3A 0V1
 Phone: 204.783.6297
 Fax: 204.783.7806
 customerservice@soundconcepts.com

C PRODUCT:

ACOUSTICAL WALL PANELS

DISCLAIMER
 THESE DRAWINGS SHOW TYPICAL DETAILS FOR SOUND CONCEPTS PRODUCTS AND THEIR INSTALLATION. THEY ARE SUBJECT TO CHANGE WITHOUT NOTICE. SOUND CONCEPTS DOES NOT WARRANT AND ASSUMES NO LIABILITY FOR THE ACCURACY, COMPLETENESS OR FITNESS FOR A PARTICULAR PURPOSE.

01	NEW DWG/SHEET	MAY16	JLB
B	NO.	REVISION	DATE BY

CAD DWG FILE:
 A-501-WALLS-SK12.DWG

SCALE: AS SHOWN

DRAWN BY: JLBRIONES

DATE: 16MAY2014

THIS DRAWING IS THE PROPERTY OF SOUND CONCEPTS WHICH RESERVES ALL COPYRIGHTS. THE SAME MAY NOT BE USED OR REPRODUCED, IN WHOLE OR IN PART WITHOUT THE WRITTEN PERMISSION OF SOUND CONCEPTS.

TITLE:

Z-BAR/ CLIP INSTALLATION GUIDE

A

1 | 2 | 3 | 4